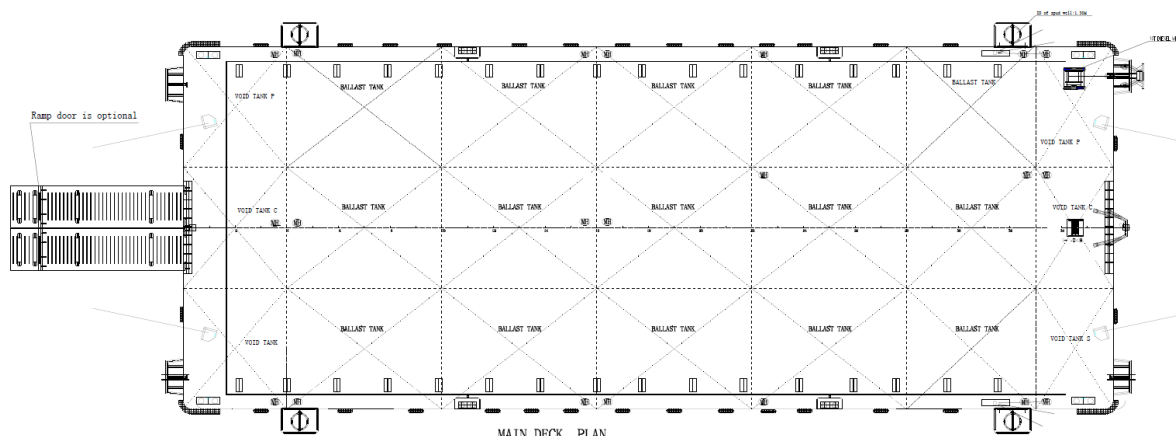


# A.M.S. 1807

180ft Deck Cargo Ballast Tank Barge (Sister Vessel to A.M.S. 1803)



## SPECIFICATIONS

<b>Registry</b>	Singapore
<b>Official No.</b>	399609
<b>Classification</b>	ABS A1 Deck Cargo Ballast Tank Barge
<b>Year Built</b>	Delivery Q4 2014
<b>Length (Overall)</b>	180 Feet (54.86m)
<b>Breadth (Moulded)</b>	70 Feet (21.34m)
<b>Depth (Moulded)</b>	14 Feet (4.27m)
<b>Cargo Deadweight</b>	Approx. 3,000 Tons
<b>Deck Load</b>	20 Ton / m <sup>2</sup>
<b>Deck Fittings</b>	4 x EA SMIT Type Towing Brackets at Bow and Stern (WLL 102T) Removable Hand Rails Ramp Fingers at Bow & Stern for Removable and Road Transportable Ramp Door (Total Dims. W5m x L10m) – (Ramp Door is Optional) Side Ladder Pockets (Integrated) 8 nos. Mooring Double Bits Type 40T WLL Bollard (Newly Designed High Strength Bollards) 32pcs Class Approved Deck Cargo Stanchions Forward A-Frame for Towing Bridle Recovery 4 Point Mooring System (10T or 20T Winches) – Optional Internal Hull Reinforcement for Spud Keepers Attachment

*\*Particulars given herein are without warranty as to accuracy and interested parties must satisfy themselves by inspection or other means of detail of the vessel\**



**AUSTRALIA MARINE SERVICES PTY LTD T/A A.M.S. Tugs & Barges**

Owner/Operator of Barges & Offshore Vessels

ABN NO: 80 072 693 639

A.M.S. MARINE HUB - Unit 6 / 220 Star Street, Welshpool WA 6106, Australia

Phone: +61 (0) 8 9470 4739 · Fax: +61 (0) 8 9470 4731

Email: AMS@a-m-s.net.au · Website: www.A-M-S.net.au



N° 12000038